

SMARTBOX[®] MOUNTING BRACKET INSTALLATION INSTRUCTIONS
AGCO[™] White Planters[®] 9000 Series - Rear Mount
Bracket Part No. SB021532 – *for use with 2 bushel seed boxes*

Always use and follow planter manufacturers owner's manual recommended safety guidelines.

Prior to installation, unfold planter and leave the planter row units in the raised position.

See the attached Drawing No. SB021532 and the AMVAC SmartBox System Parts and Operator's Manual for additional installation information.



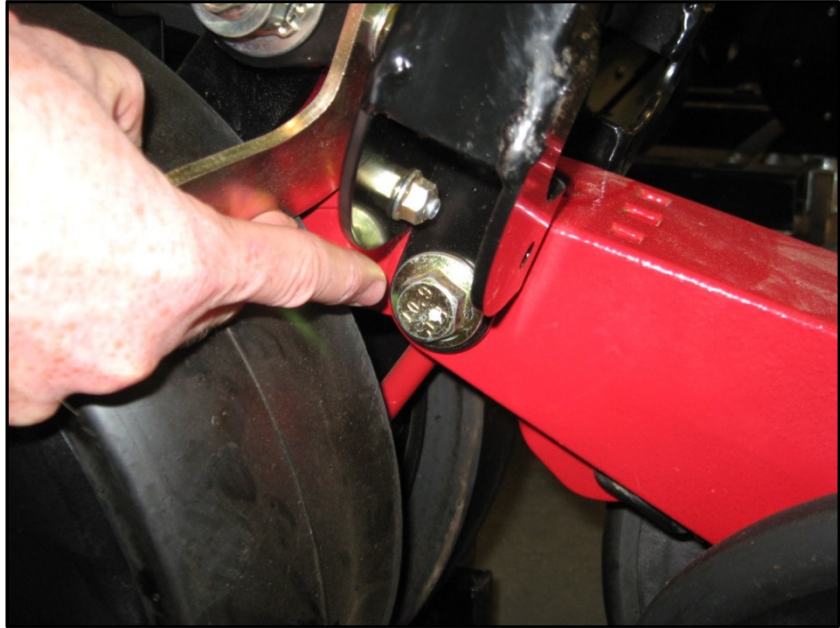
- A. Start by attaching the Plate Angle, RH & LH (*item no. 13 and 14*) to the seed box's front cast iron mounting location using the bolt, washer, and nut (*item no. 4, 9 and 16*) provided.

As shown, the thick washer serves as a spacer.



- B. Remove the row unit's closing wheel assembly pivot bolt on one side of the planter. Using the same bolt install the Weldment, Tube Brace (*item no. 15*).

Repeat this process on the opposite side of the row unit.



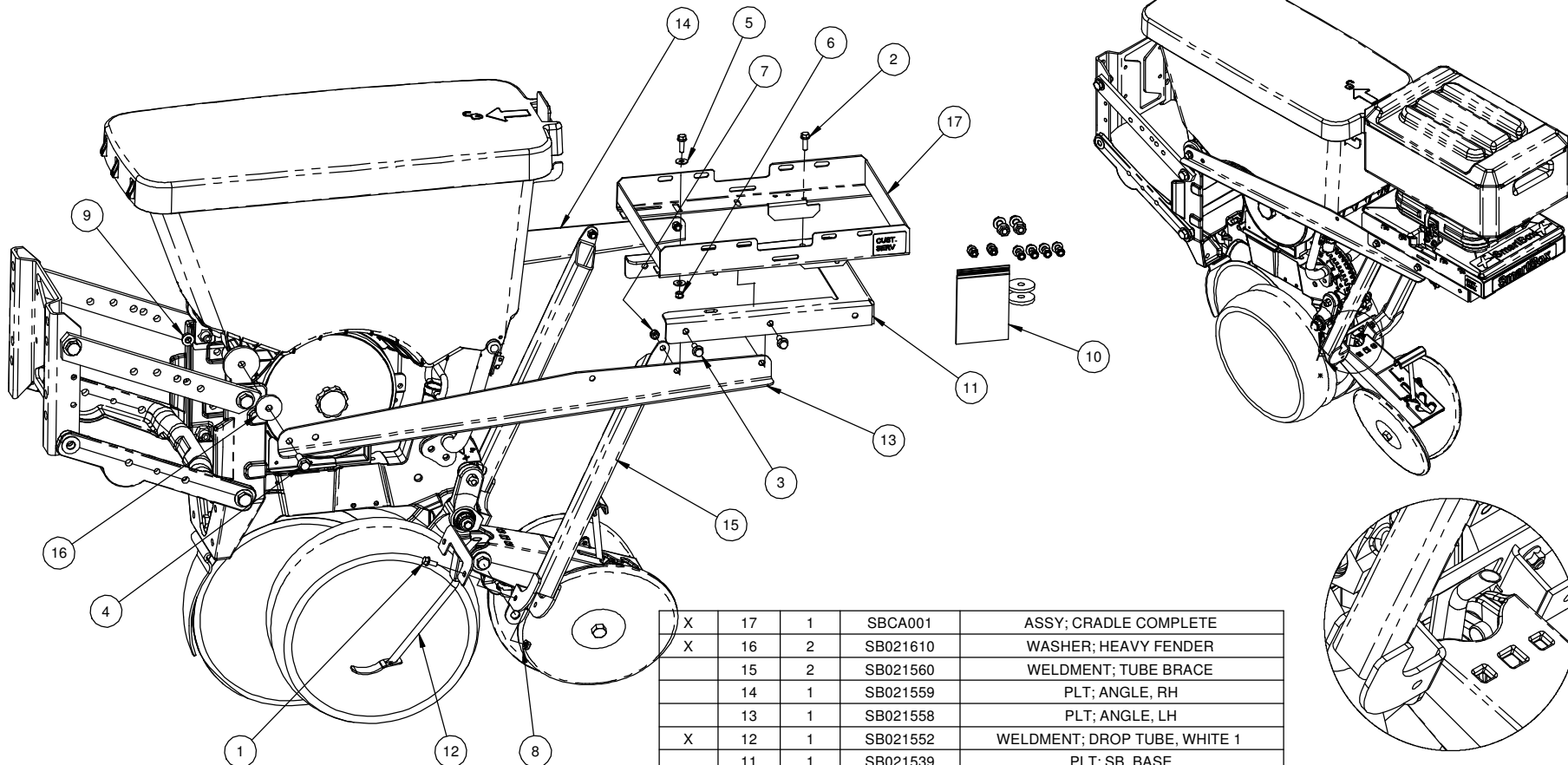
- C. Fit the Plate, SB, Base (*item no. 11*) over the left and right Angle Plates and Tube Braces. Align the front two (2) Base Plate holes with the rearward two (2) bolt holes in the Angle Plates. The Tube Braces will be aligned with the center holes of the left and right Angle Plates. Fasten using bolts and locknuts (*item no. 3 and 7*).

NOTE: The third set of holes on the rear of the Base Plate will not be used.

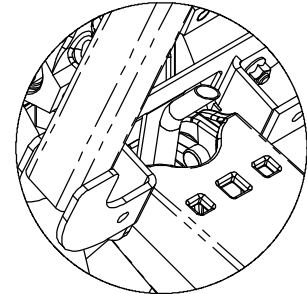


Refer to the *AMVAC SmartBox System Parts and Operator's Manual* regarding the installation of the remainder of the system.

REVISIONS				
REV	DATE	DESCRIPTION	BY	ECO
A	6/6/13	RELEASE TO PRODUCTION	ATM	7610



X	17	1	SBCA001	ASSY; CRADLE COMPLETE
X	16	2	SB021610	WASHER; HEAVY FENDER
	15	2	SB021560	WELDMENT; TUBE BRACE
	14	1	SB021559	PLT; ANGLE, RH
	13	1	SB021558	PLT; ANGLE, LH
X	12	1	SB021552	WELDMENT; DROP TUBE, WHITE 1
	11	1	SB021539	PLT; SB, BASE
	10	1	SB021538	KIT; AGCO WHITE, 2 BU.
X	9	2	NTF-044-TL-8	NUT, FLANGE; 7/16", TOP LOCK, GR8
X	8	2	NTF-031-TL-8	NUT, FLANGE; 5/16", TOP LOCK, GR8
X	7	4	LN-038-NI	LOCKNUT, NYLON INSERT; 3/8", GR5
X	6	4	LN-031-NI	LOCKNUT, NYLON INSERT; 5/16", GR5
X	5	4	FW-031	WASHER, FLAT; 5/16"
X	4	2	BHF-044-150-5	BOLT, FLG; 7/16"x1 1/2" GR 5
X	3	4	BHF-038-100-5	BOLT, FLG; 3/8"x1" GR 5
X	2	4	BHF-031-100-5	BOLT, FLG; 5/16"x1" GR 5
X	1	2	BHF-031-075-5	BOLT, FLG; 5/16"x3/4" GR 5
NOTE:	ITEM NO.	QTY.	PART NUMBER	DESCRIPTION



DETAIL A
SCALE 1 : 3

NOTES:
X = ITEMS INCLUDED IN PARTS BAG SUBASSEMBLY, OR DIFFERENT LINE ITEM.

MATERIAL: Material <not specified>		APPROX. WEIGHT: 136.13LBS	
DIMENSIONS ARE IN INCHES			
TOLERANCES (EXCEPT AS NOTED)			
2 PLACE DECIMALS	± .06		
3 PLACE DECIMALS	± .030		
ANGLES	± .1°		
THIRD ANGLE PROJECTION			
DRAWN: ATM		DATE: 5/28/13	
SIZE: B		SCALE: N/A	
DESCRIPTION: ASSY; AGCO WHITE 2 BU BRACKET		DWG NO. SB021532	
		REV. A	
		SHEET 1 OF 1	